



cortek<sup>TM</sup>

CAPABILITY STATEMENT



When it comes to steel framing, think Cortek. We partner with our clients to design and supply steel framing solutions for successful construction projects.

From commercial to residential, aged care to schools, we have over 20 years of experience in light gauge steel pre-fabrication.

# Steel: The Logical Solution

It's lighter, straighter, stronger, more durable than alternative construction methods. It's also non-combustible, termite resistant, and has a higher strength-to-weight ratio.

The material of choice for future-thinking builders and developers.

## WHY BUILD WITH STEEL



Stronger



Straighter



Lighter



Longer-lasting



Faster to install



Non-combustible



Sustainable

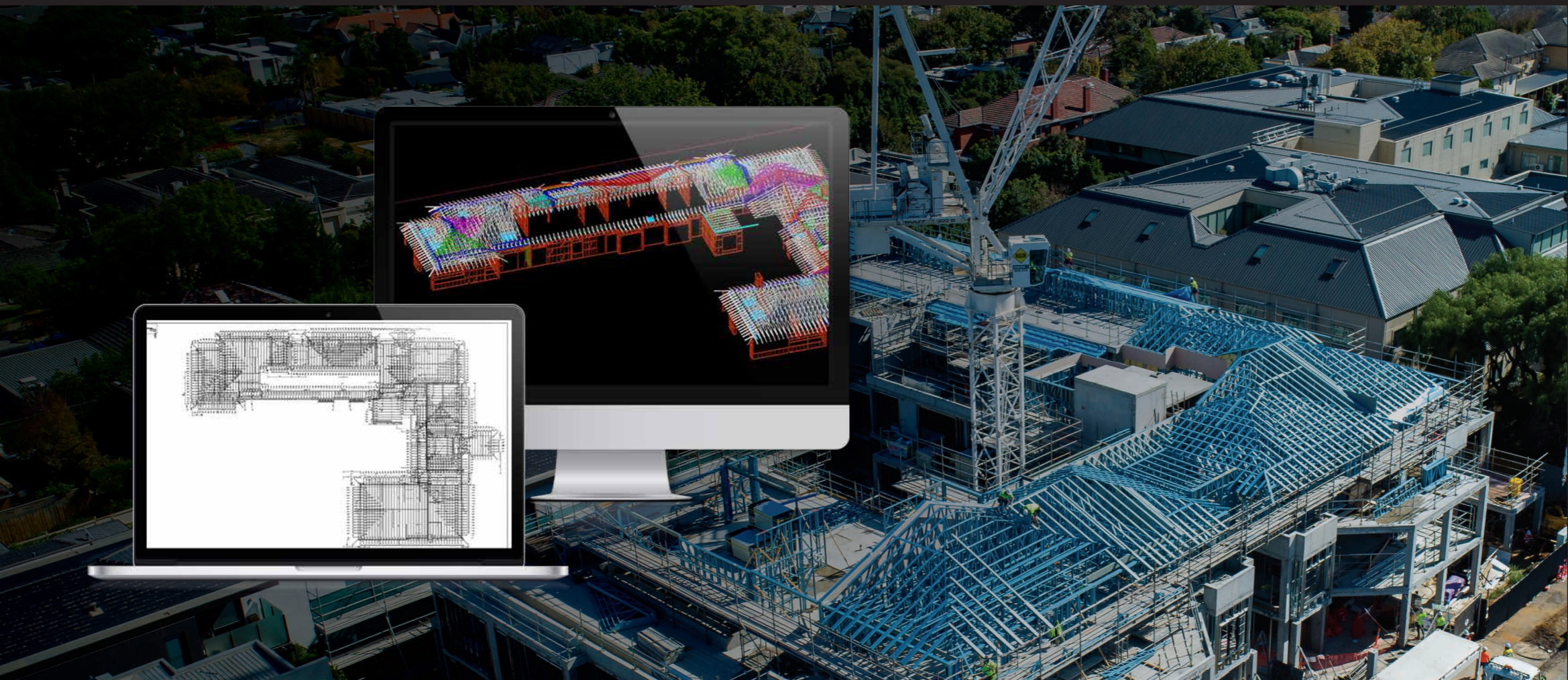


Profitable



Vertical  
Integration

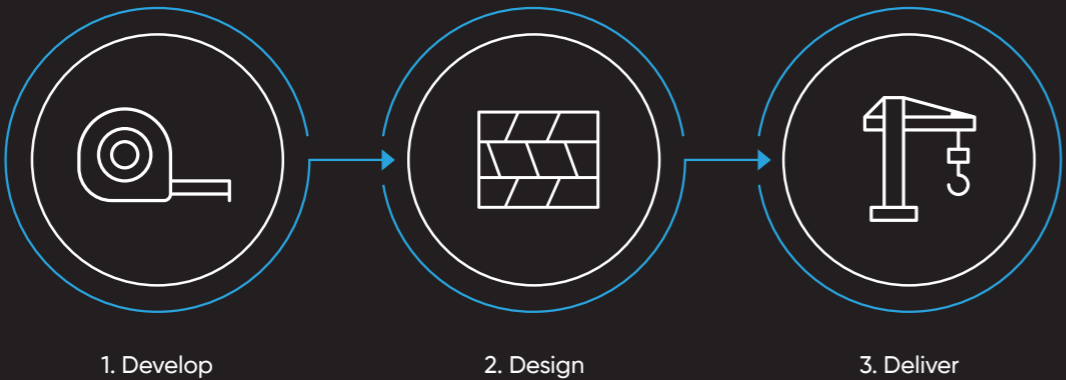
Clear, consistent communication,  
a laser-like focus on the customer,  
and steel framing solutions that  
stand up to every job.



OUR SERVICES

- Project and design consultation
- Design detailing and drafting
- Engineering
- Structural steel design
- Seismic, fire rating, thermal and acoustic design
- Manufacture
- Delivery
- Project support

OUR  
PROCESS



1. Develop

Every project is unique in design, scope, and detail – allow us to arrange a consultation session to provide value managed solutions tailored to your project needs.

2. Design

Using the latest 3D computerised software, framing is shop detailed in-house including comprehensive fabrication layout plans and fixing locations. Framing is modelled and engineered to comply with the relevant building codes and certified engineering specifications.

3. Deliver

Coordination meetings and communication along with site support form part of our unique customer focused service.

Framing is manufactured in a controlled environment from light gauge steel materials using state of the art CNC machinery. Deliveries are coordinated to suit individual project schedules and requirements.

# The Cortek Sustainability Commitment

In today's environment, a commitment to sustainable development is not considered as a fictional bias. It has rapidly evolved into a tangible path to a future defined by like-minded companies and individuals striving to impact the way we think, act, and focus on the three critical areas of sustainability.

Cortek's modus operandi to a sustainable design and manufacturing approach, provides a meaningful contribution in line with Australia's 2030 agenda for Sustainable Development Goals (SDG).



## 01 Environmental Sustainability

- Circular Economy
- Energy Efficiency
- Green Energy
- Infrastructure Imperatives
- Carbon Management
- Environment Conservation

02

## Social Responsibility

- Health & Safety
- Wellness
- Work-Life Balance
- Community Engagement
- Empowerment
- Collaboration



## 03 Economic Sustainability

- Prosperity Planning
- Employment Stability & Investment
- Supply Chain Management
- Waste & Recycling Management
- Efficiency, Growth & Profit Balance
- Strategic Vertical Integration

Project 30 Haines Street, North Melbourne  
Builder Arc3  
Image Credit MAB / Flood Slicer (Artist)

Project Profiles



**Project** Latrobe Regional Hospital – Stage 3A – Traralgon  
**Builder** Built  
**Sector** Healthcare



**Project** Skye Lodge Frankston  
**Builder** Aged Care Developments  
**Sector** Aged Care



**Project** Mecwacare – Mont Albert North  
**Builder** Total Construction  
**Sector** Aged Care



**Project** Maddingley Village Townhouses  
**Builder** Empire Properties  
**Sector** Multi-Residential



**Project** Wollert East Primary School  
**Builder** Adco Constructions  
**Sector** Education

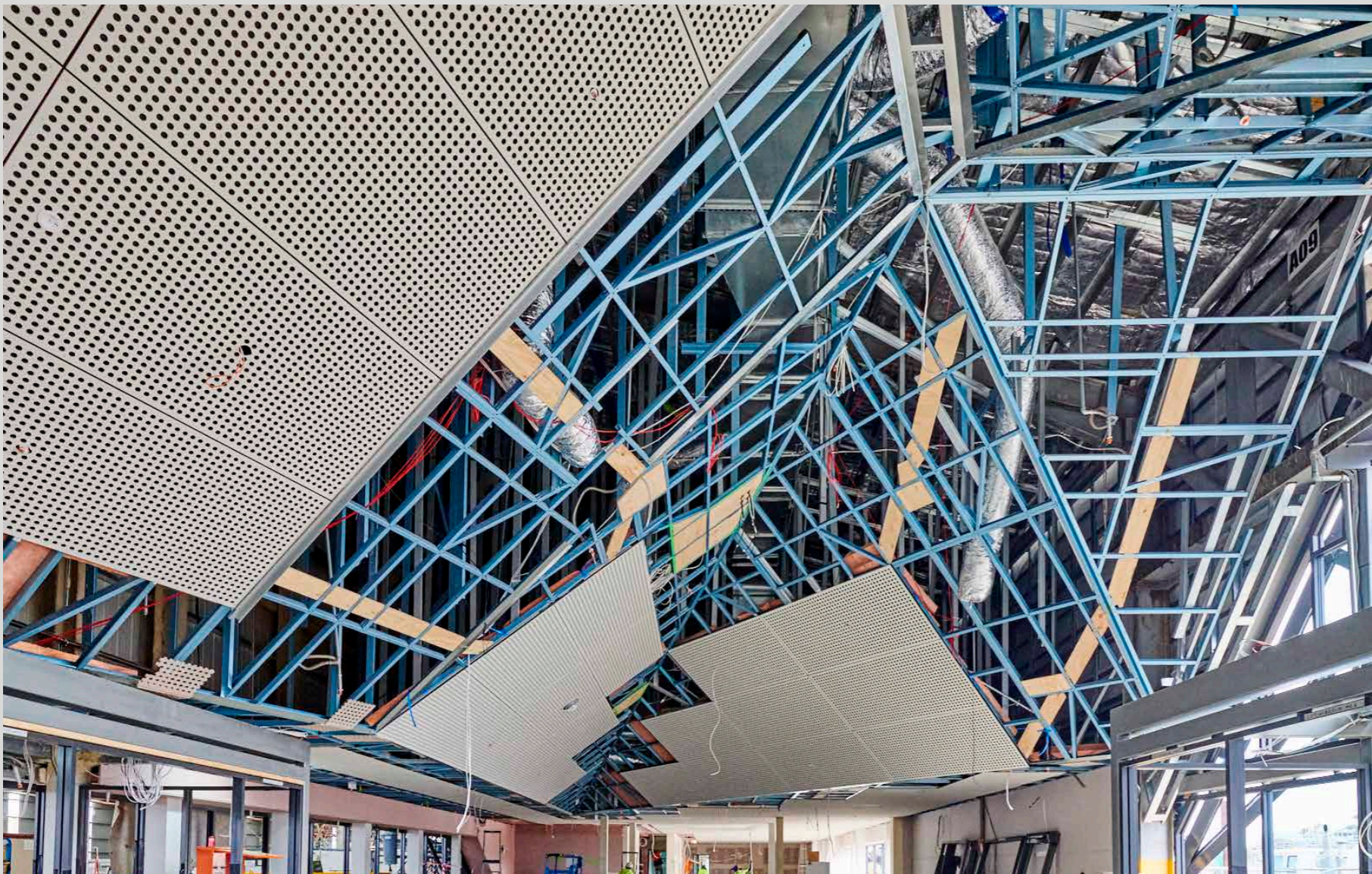


**Project** Hazel Hawthorn  
**Builder** Quadrant Building  
**Sector** Multi-Residential



**Project** McDonalds – Chirnside Park  
**Builder** Becon Construction  
**Sector** Retail

Project Profiles



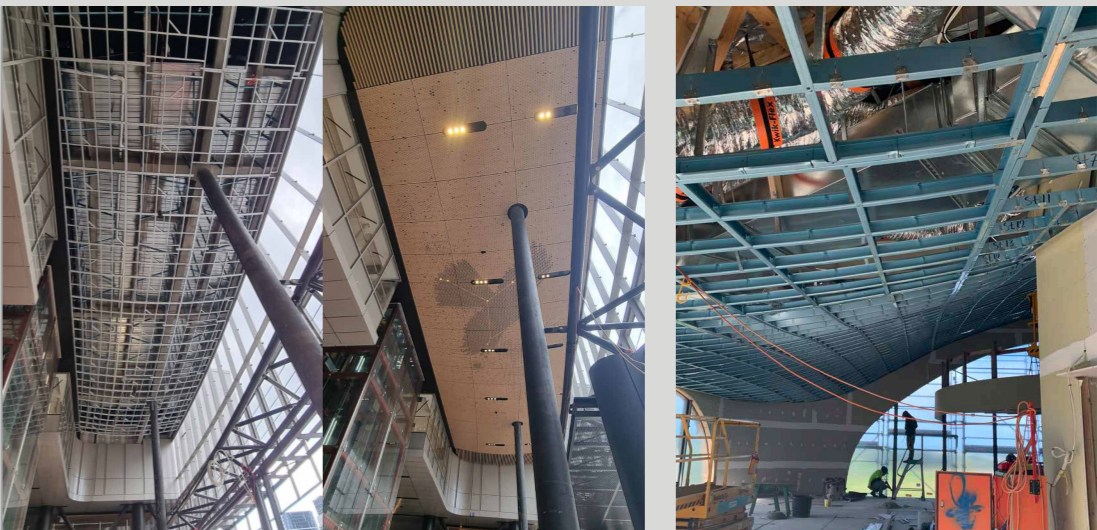
**Project** Spirit of Tasmania Quay – Geelong  
**Builder** Kane Constructions  
**Sector** Commercial



**Project** The Gardens Community Facility  
**Builder** Sunland Group  
**Sector** Residential



**Project** Penleigh and Essendon Grammar School  
**Builder** McCorkell Constructions  
**Sector** Education

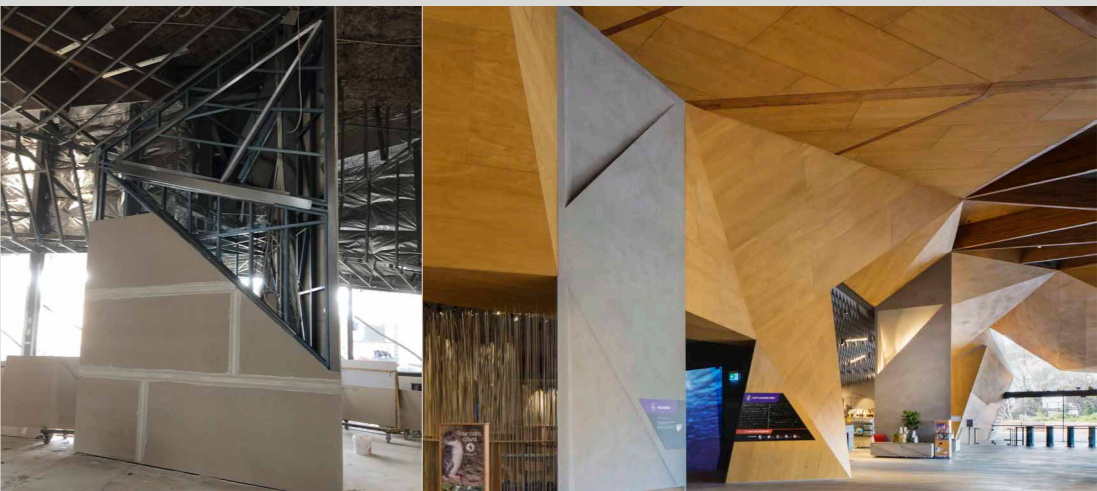


**Project** Marvel Stadium Upgrade  
**Builder** John Holland  
**Sector** Commercial

**Project** Keys Road, Flinders  
**Builder** Midway Plaster  
**Sector** Residential



**Project** Paula Fox Melanoma and Cancer Centre  
**Builder** Kane Constructions  
**Sector** Healthcare



**Project** Penguin Parade Visitor Centre – Philip Island  
**Builder** Kane Constructions  
**Sector** Commercial

# Lasting legacy, new possibilities

Founded in 2003 with a vision – to make the complex simple. Our commitment to ‘construction through innovation’ has meant we’ve always been at the forefront of the industry, then and now.

Formally known as SBS Group, this name implies trust and confidence within the construction industry. Cortek is a new brand building on this existing solid foundation to offer more value, creativity and possibilities than ever before.

With over 50 staff, and having been accredited as ‘A Great Place to Work’ for three years, the Cortek team are dedicated to creating the ideal design for every project.

We believe in creating not only successful construction projects – but relationships, too. Partner with us, experience the Cortek difference and we will show you how our personalised, passionate service and expertise sets us apart and keeps our clients coming back to us.



20+

Years of experience

4,000+

Projects Completed

65,75, 89,150

Profile Capacities

100%

Australian Owned & Operated

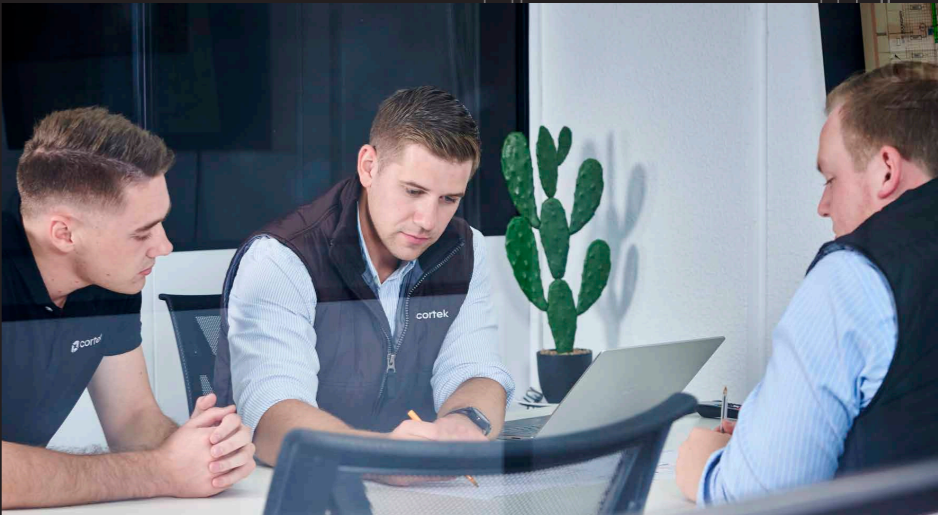
4M+

L/M per annum



## SECTORS

- Commercial
- Government
- Retail
- Aged Care
- Education
- Multi Residential
- Healthcare



## PARTNERS





Unit 1, 308-310 Maroondah Hwy  
Chirnside Park VIC 3116

P 1300 782 950  
[sales@cortekframing.com.au](mailto:sales@cortekframing.com.au)

CONSTRUCT WITH CONFIDENCE

[cortekframing.com.au](http://cortekframing.com.au)

